









EL-5117
5+



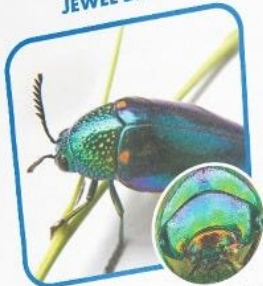
GeoSafari Jr.
KIDSCOPE™

BOOK OF SUPER SCIENCE SLIDE FACTS



INSECTS

GREEN JEWEL BEETLE



Jewel beetles are known for their oval-shaped bodies and iridescent, bright colors. They prefer to lay their eggs in recently burned forests and can sense pine wood smoke from up to 50 miles away. These beetles are quick to fly when they feel threatened and are very hard to catch.

GYPSY MOTH CATERPILLAR



Gypsy moth caterpillars feed constantly off shedding, woody trees until they are fully grown (about 2 inches). They will then find a place to morph into a pupa, and will go through five to six stages before becoming a moth.

LADYBUG



Ladybugs are not actually bugs; they belong to the beetle family and are also known as ladybirds or lady beetles. If a ladybug feels threatened, it will release a foul-smelling liquid from its leg joints. A hungry adult ladybug can eat over 50 aphids a day and about 5,000 in its lifetime.

DRAGONFLY



Dragonflies first appeared on earth over 300 million years ago, and live on every continent except Antarctica. They have large bodies and long wings that beat up to 1,800 times per minute. Each of their large eyes actually contains about 28,000 individual eyes.

FLOWERS

SUNFLOWER



When sunflowers begin to grow, they follow the direction of the shining sun. This is called solar tracking. The green flower bud always faces east toward the early morning sun and throughout the day, it tracks the sun across the sky.

ORCHID



Orchids can be found throughout the world and mostly live in tropical rainforests. There are more than 25,000 different species of orchids, all with unique colors and sizes. Some orchids can live up to 100 years!

MORNING GLORY



Morning glory flowers open their petals in the early morning and often close them in the afternoon. Morning glory flowers are shaped like trumpets and have heart-shaped leaves. They bloom in colors of blue, white, purple, red, pink, and orange.

STARGAZER LILY



Stargazer lilies typically grow up to three feet high and bloom during the summer months. These flowers are known for their strong smell, a fragrance that is slightly spicy. Although beautiful, lilies contain toxins that are poisonous to cats.



